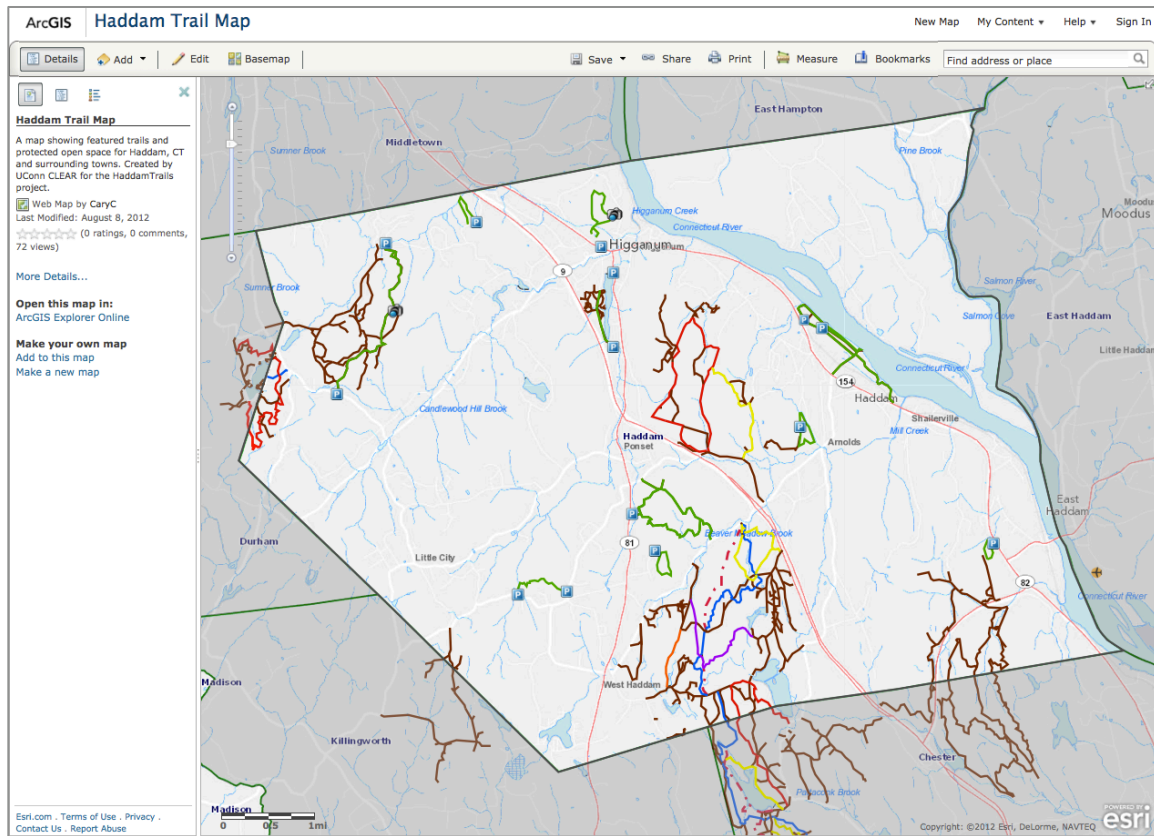
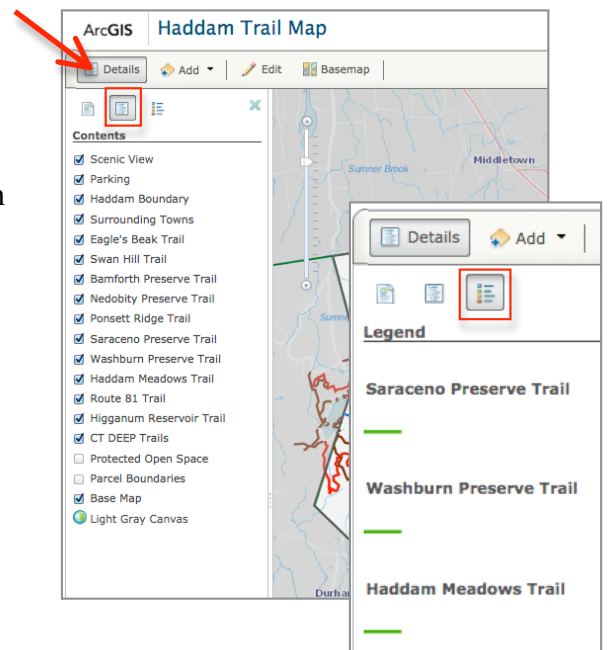


Working with the Haddam Trails Interactive Online Map



About: The HaddamTrails.org interactive online maps shows featured trails in Haddam (depicted in green) along with state owned trails maintained by the Connecticut Department of Energy and the Environment (CT DEEP). The map was created by UConn’s Center for Land use Education and Research (CLEAR) for the Haddam Trails project and is intended for recreational use only.

Access the map: The interactive trail map is available on the HaddamTrails.org website. It can also be accessed in a web browser at <http://tinyurl.com/HaddamTrailMap>. Smartphone users can access the interactive map on their Apple iPhones, Android phones or Windows7 phones through the free Esri ArcGIS App available in app stores.

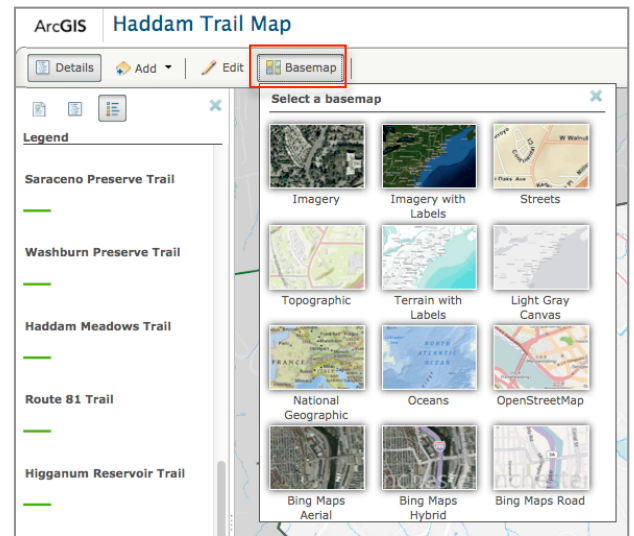


Viewing Map Content: The map depicts the locations of trails in the town of Haddam. If the trail is blazed, the color of the blaze is represented as the trail line on the map. A user can also click directly on a trail line to identify the trail name and blaze color (if one exists). Known parking locations are also shown on the map. A user can view trail names by click on the “Show Map Contents” icon in the Details panel along the left side of the interface (see image). Alternatively, the map legend can be viewed by clicking the “Show Map Legend” icon.

Changing the Basemap: By default, the Haddam Trails basemap is a simple greyscale background. The basemap can be changed by clicking the “Basemap” icon along the top of the map interface. A number of basemap options will appear allowing a user to select the desired background image or dataset. Only one basemap can be displayed at a time.

Navigating within the Map: A user can zoom in or out on the map by using the scroll wheel on the mouse or by using the zoom scale along the upper left side of the interface. The map can be panned by clicking and holding the left mouse button and “dragging” the map to a new location.

Find Address: The search box in the upper right corner of the interface can be used to find an Address. Results will be displayed in a pop-up window on the map.



Printing a Map: A basic print layout can be created by clicking on the Print tool located along the top of the mapping interface. The Print tool takes a basic screenshot of the map at the current display scale.

